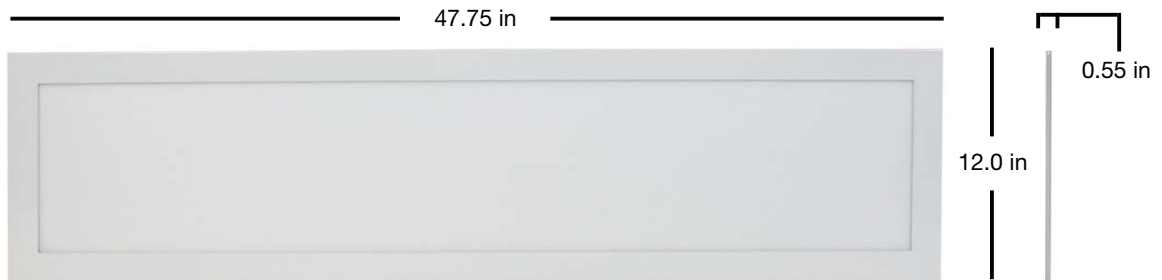


PRODUCT SPECIFICATIONS

1x4 Flatlight™ Luminaire Fixture

Replaces existing fluorescent 1x4 Luminaires

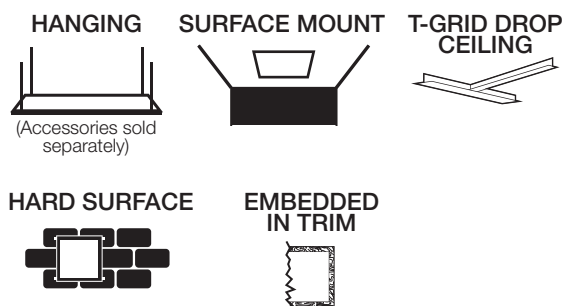


ADVANTAGES

- Internal driver allows for TruFlat® Mounting
- Edge-lit LED provides a thin energy efficient light source with excellent uniformity
- 90° bezel edge
- Lasts 60%* longer than standard troffer lighting
- Bright uniform light
- Low heat dissipation - reduce HVAC costs
- Low energy consumption
- Replaces fluorescent fixture and tube
- Environmentally positive - RoHS compliant
- Type IC Rated
- 5 year limited warranty

APPLICATIONS

Suitable for dry and damp locations



SPECIFICATIONS

Model Number	FLT14C30MDUP44-A
Power	48W
AC Voltage, Frequency	120~277V, 50/60 Hz
Color Temp (nom.)	3000K
Operation Temp	- 20°C ~ 40°C
CRI	≥80
Lumen Output (min.)	4200 lm
Dimming	No
Lifetime Rating	50,000 Hrs

PACKAGING

Weight (±0.5 lb)	10.2 lbs
Mounting plate	2.0 lbs
Size (L x W x H) (±0.1 in)	47.75 x 12.0 x 0.55 in
Box Dimensions	51.75 x 15.5 x 2.6 in
Gross Weight	14.6 lbs
UPC	8 55158 00321 8



INCLUDED IN BOX

- Mounting plate
- Installation guide
- Installation bracket
- Junction box screws (2)
- Wire Nuts (3)
- Dry wall screws (4)
- Toggle bolts (4)
- Grounding wire

Contact Information 888-925-7494 · www.pixilighting.com

*Based on standard ballast average lifetime.

Polar Candela Distribution

